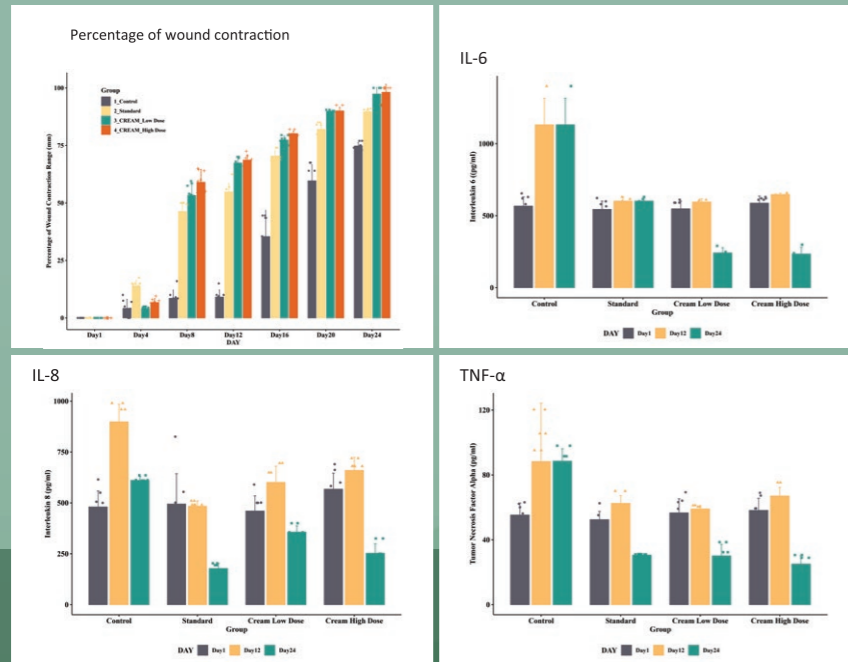


## EFFECT OF CREAM ON WOUND



### UNIQUE PROPERTIES OF HERBAHEAL CREAM

- HerbaHeal cream helps the wound heal faster with less scars.
- This cream removes infections and reduces inflammatory response.
- The unique combination of extracts have anti-microbial activity.
- Through in-vitro and in-vivo studies, HerbaHeal cream has been shown to accelerate the body's natural healing processes and to promote optimal wound healing process.

Funded by DST-SHRI



DEPARTMENT OF SCIENCE & TECHNOLOGY  
MINISTRY OF SCIENCE & TECHNOLOGY  
GOVERNMENT OF INDIA

Technology developed and standardised by



**PANKAJAKASTHURI**  
for life. for ayurveda  
Since 1988

Technology developed for



Palamalai Indigenous  
Malayali Tribal Healers Group

MANUFACTURED UNDER THE SCIENTIFIC SOCIAL RESPONSIBILITY INITIATIVE

Pankajakasthuri Herbals India (P) Ltd.

Poovachal, Trivandrum, Kerala, India. Pin Code - 695575. Telephone: 0472-2895301, 2896301



WELLNESS OF TRADITIONAL  
HERBAL KNOWLEDGE

PANKAJAKASTHURI®

# HerbaHeal

CREAM



## COMPREHENSIVE HERBAL BURN & WOUND CARE

ANTI-SEPTIC & ANTI-MICROBIAL HEALING CREAM



Founder and Managing Director  
Padma Shri Dr. J. Hareendran Nair

## EFFECTIVE WOUND & BURN HEALING MANAGEMENT

Pankajakasthuri HerbaHeal Cream was developed with the financial support of DST-SHRI, a project focused on the standardisation and product development of traditional medicinal knowledge of the Malayali tribal community. This is an excellent initiative that can contribute to preserving indigenous wisdom, promoting sustainable practices, and providing healthcare solutions rooted in local traditions.

The formulation/product was standardised by Pankajakasthuri Ayurveda Medical College & PG Centre. The product will be manufactured under the Scientific Social Responsibility Initiatives by Pankajakasthuri Herbals India (P) Ltd. for the Palamalai traditional Malayali healers self-help group.

## INGREDIENTS

10 gm contain extract derived from:

NAME	PART USED	FORM	GRAM
ARISTOLOCHIA INDICA	ROOT	HYDROALCOHOLIC EXTRACT	1.219
SWERTIA CHIRATA	WHOLE PLANT	HYDROALCOHOLIC EXTRACT	0.746
ADIANTUM LUNULATUM	WHOLE PLANT	HYDROALCOHOLIC EXTRACT	0.819
COMMIPHORA CAUDATA	ROOT	HYDROALCOHOLIC EXTRACT	1.099
CHLOROXYLON SWIETENIA	FLOWER	HYDROALCOHOLIC EXTRACT	1.053
STEARIC ACID	-	POWER	2.271
GLYCERYL MONOSTEARATE	-	POWER	0.361
RICINUS COMMUNIS	-	OIL	3.221
BHA	-	POWER	0.032
BHT	-	POWER	0.032
POTASSIUM HYDROXIDE	-	POWER	0.274
SODIUM BENZOATE	-	POWER	0.057
EDTA	-	POWER	0.032
DISTILLED WATER	-	-	3.221



SWERTIA CHIRATA



ARISTOLOCHIA INDICA



ADIANTUM LUNULATUM



COMMIPHORA CAUDATA



CHLOROXYLON SWIETENIA



### DOSAGE:

USE 2-3 TIMES DAILY OR AS NEEDED



### INDICATIONS:

CUT, WOUND, BURN



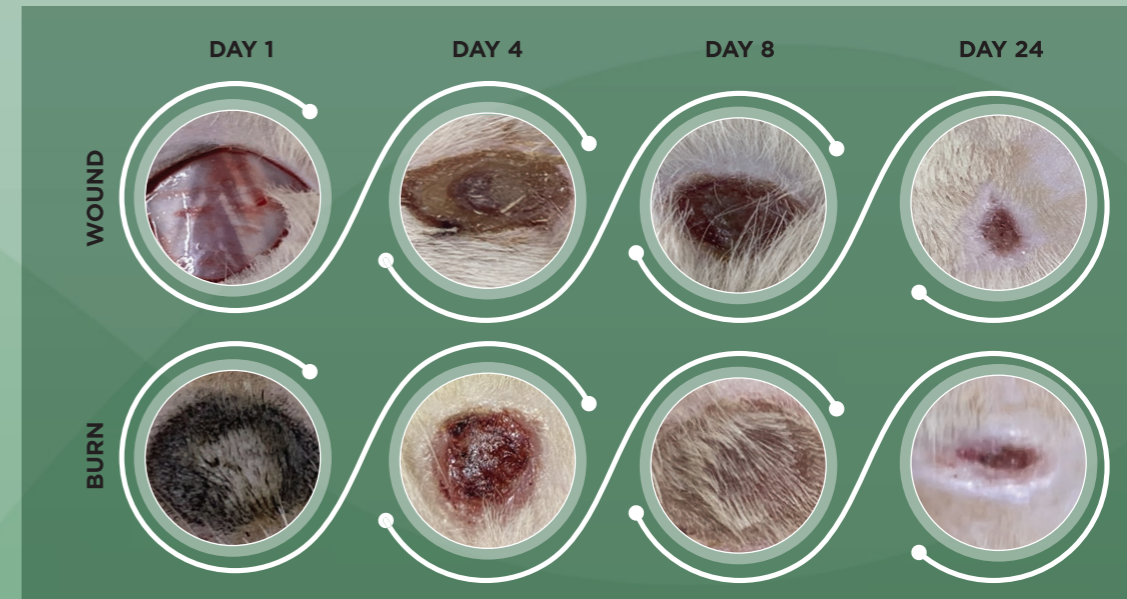
### STORAGE:

STORE IN A COOL, DRY PLACE. KEEP THE LID TIGHTLY CLOSED.

## WOUND & BURN HEALING EFFECT

Pankajakasthuri HerbaHeal Cream recorded significant healing effect with wound contraction potency. The activity observed is comparable with that of the standard (silver sulfadiazine). Hence, this product can act as a good wound and burn healer.

## WOUND & BURN HEALING EFFECT OF THE CREAM



HerbaHeal cream decreases IL-6 and TNF- $\alpha$  production. Hence, it can be concluded that this cream may have anti-inflammatory effect via inhibiting the proinflammatory cytokines.

## EFFECT OF CREAM ON BURN

